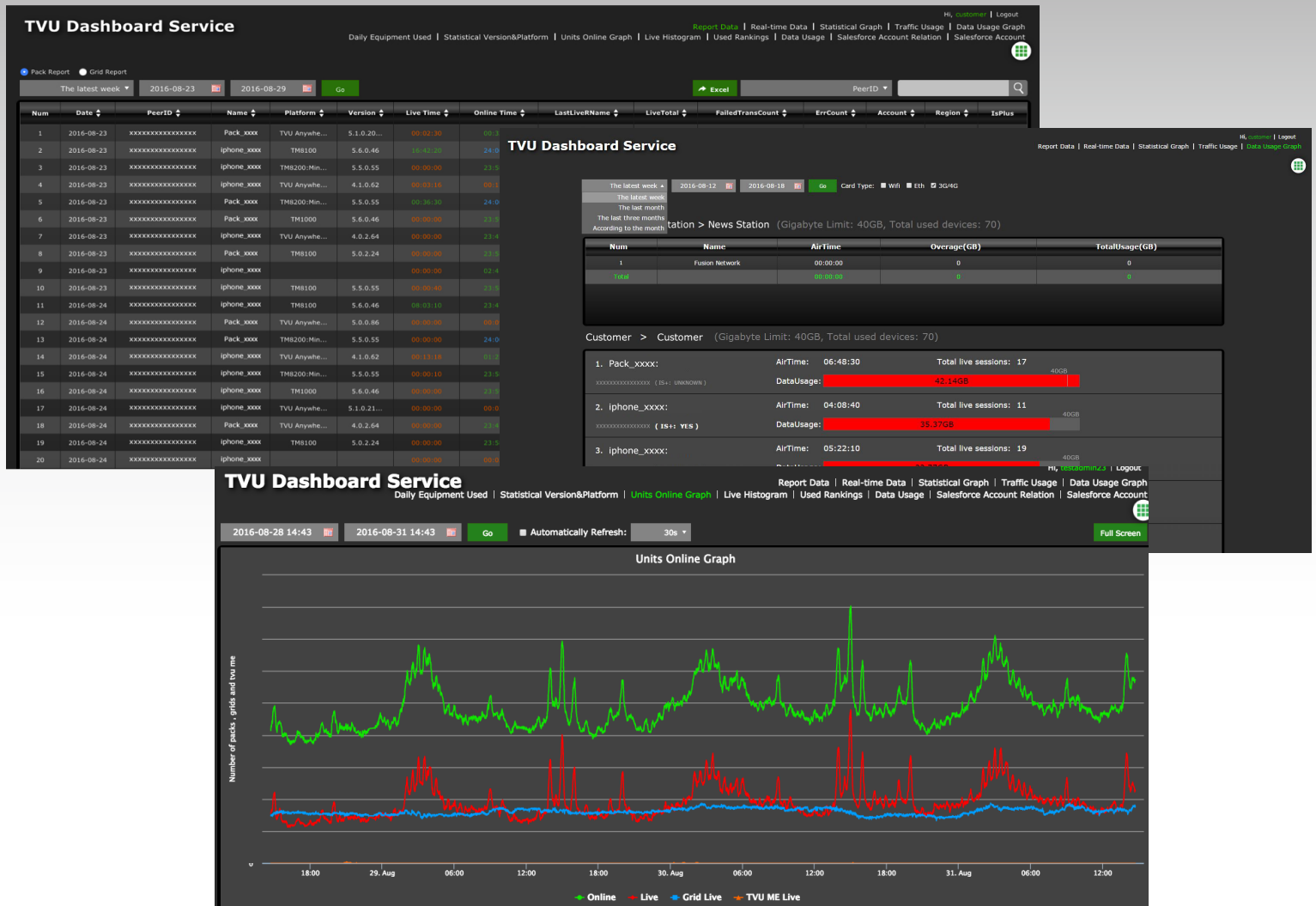


## Easily Monitor Your Transmission Activity and Measure Your Data Usage from One View



The TVU Dashboard features an overall list view of all TVU assets, the platform from which the video is being transmitted (TVU One, TVU Anywhere, TVU MLink, etc.), real time data and statistical information on data usage.

In addition, TVU Dashboard shows the actual live time of each asset, analytics and the software information of each TVU transmitter. TVU Dashboard is a one-stop overview of the performance, use and status of all TVU assets.

TVU Dashboard also provides a quality-level histogram that shows the total transmission encoding bit-rate over a period of time. This allows users to configure datacards and get the highest quality and best use of their TVU video transmission equipment.